

**SHORT TERM
LEASES
AVAILABLE**

KORE co-working

KORE 9250

9250 E COSTILLA AVE, GREENWOOD VILLAGE, CO

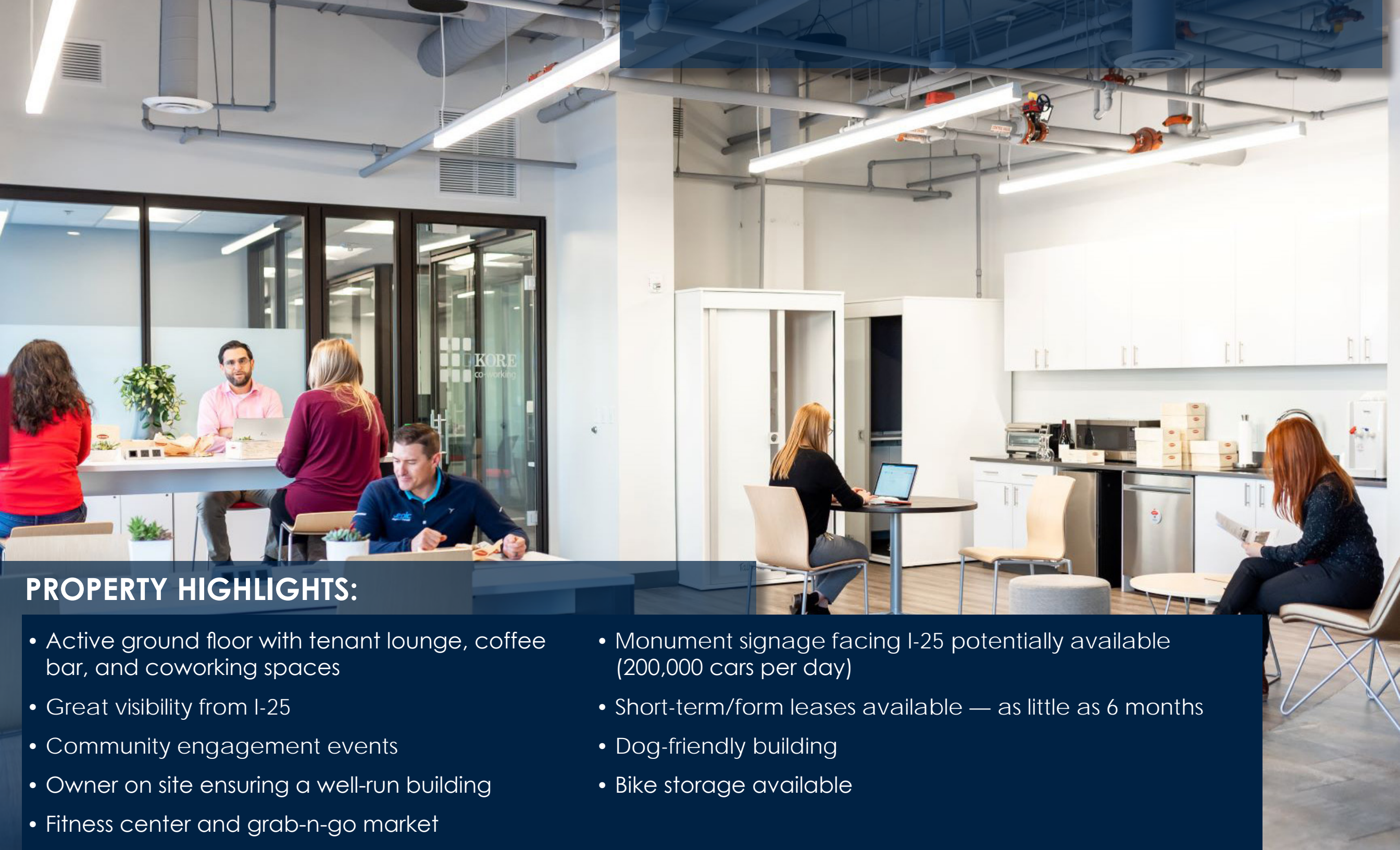
OFFICE OR MEDICAL

For leasing information contact:

Michelle Gertzman | 720.743.6399
mgertzman@premisescommercial.com

Matt Smith | 303.996.8460
msmith@premisescommercial.com





PROPERTY HIGHLIGHTS:

- Active ground floor with tenant lounge, coffee bar, and coworking spaces
- Great visibility from I-25
- Community engagement events
- Owner on site ensuring a well-run building
- Fitness center and grab-n-go market
- Monument signage facing I-25 potentially available (200,000 cars per day)
- Short-term/form leases available — as little as 6 months
- Dog-friendly building
- Bike storage available



CLOSE TO SHOPPING,
RESTAURANTS & PARKS



KORE
9250

FIDDLER'S GREEN
AMPHITHEATRE

crumbl
SPROUTS
FARMERS MARKET
Jersey Mike's
SUBS

REI

THE HOME DEPOT

SAFEWAY

PIN DUS TRY

Garnish

E Atraphoe Rd

E Atraphoe Rd

QDOBA

BURGER KING

BENEDICT'S
BREAKFAST • LUNCH • BURGERS

TACO BELL PAPA JOHN'S

Schlotzsky's

Sushi Katsu

Walmart

WALNUT HILLS
ELEMENTARY

VENALONZO'S TACOS

WALNUT HILLS
PARK

VIEWHOUSE
EATERY, BAR & ROOFTOP

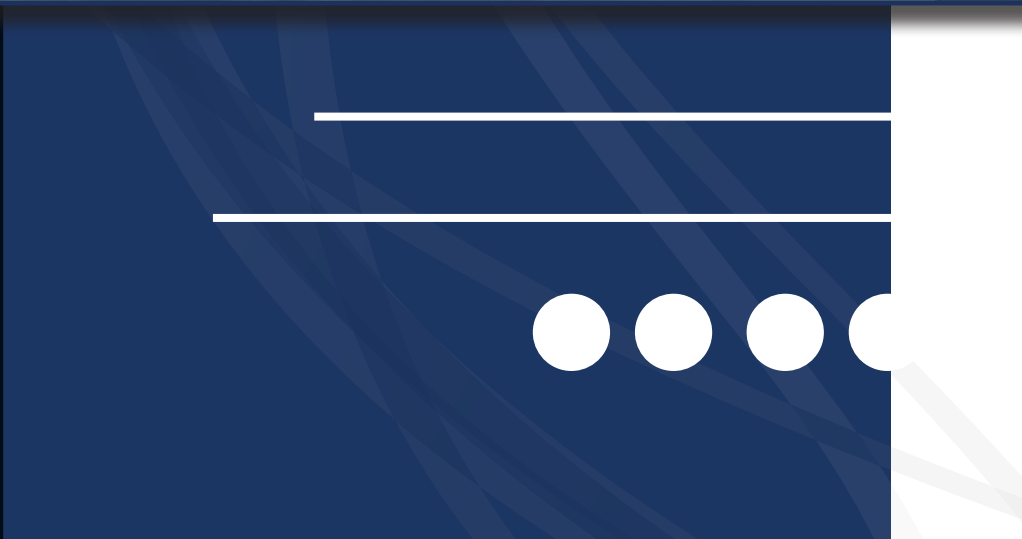
TOPGOLF

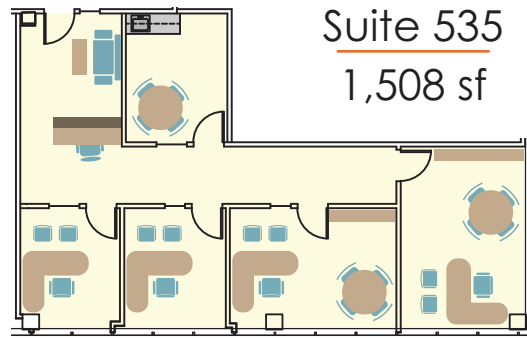
INTERSTATE
25

HUNTERS HILL
PARK

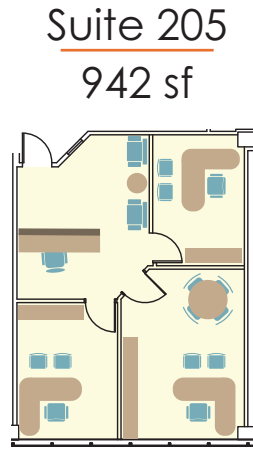
DRY CREEK
ELEMENTARY

MAGGIANO'S
LITTLE ITALY

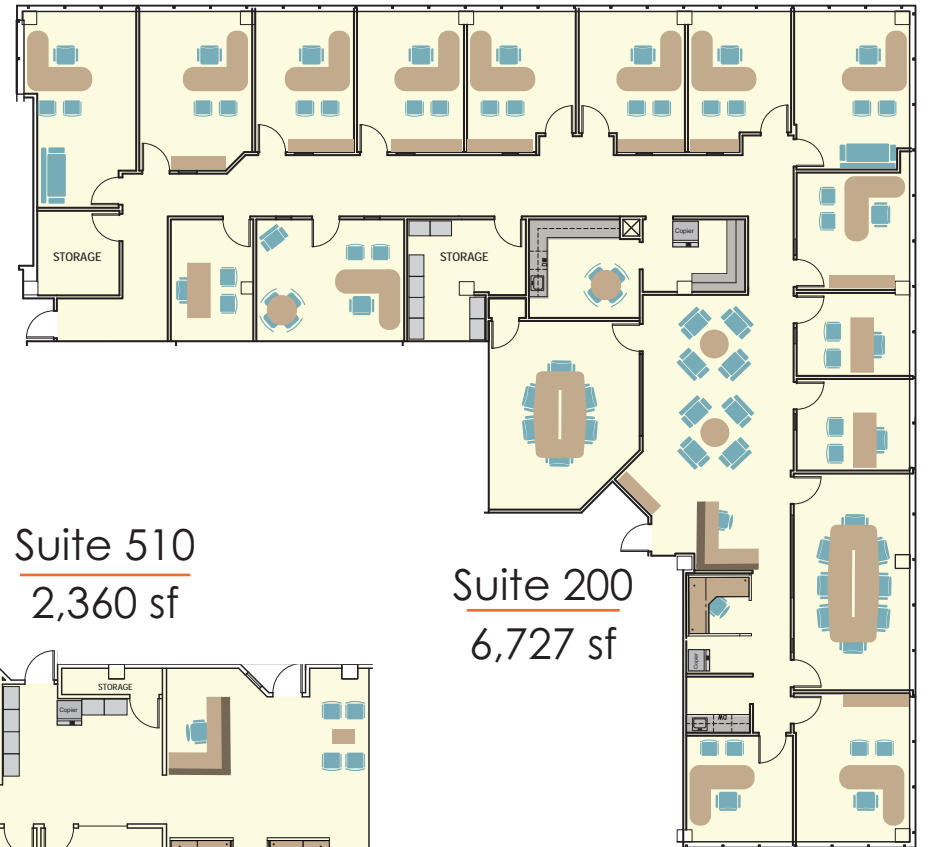




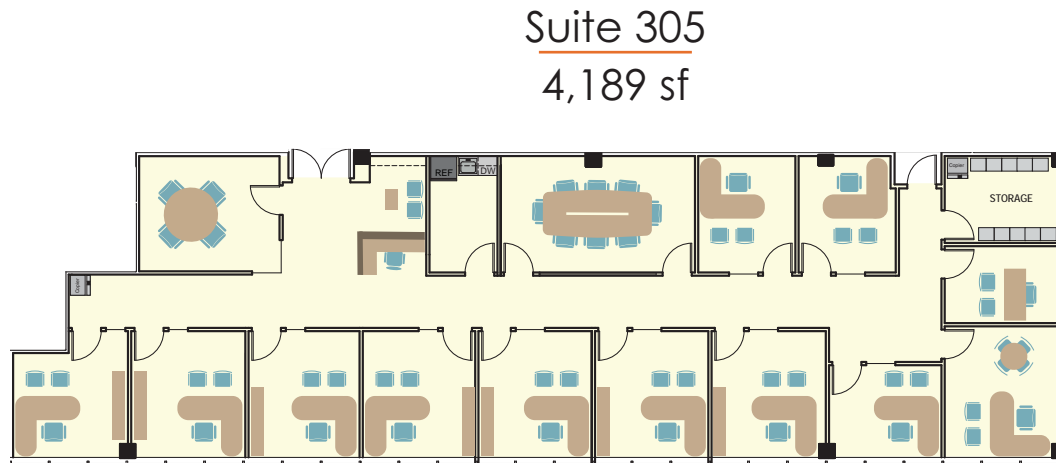
Suite 535
1,508 sf



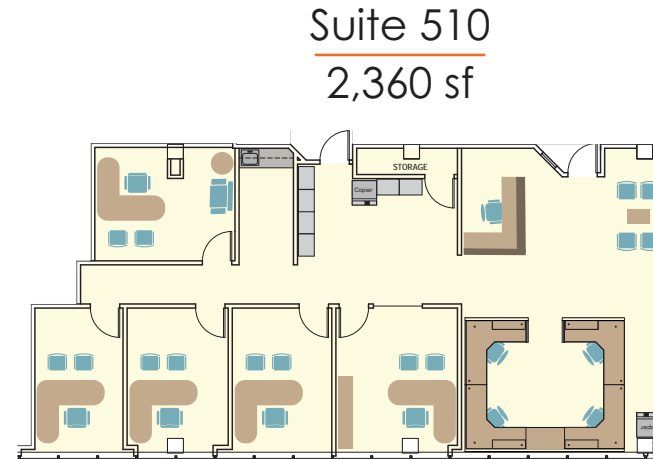
Suite 205
942 sf



Suite 200
6,727 sf



Suite 305
4,189 sf



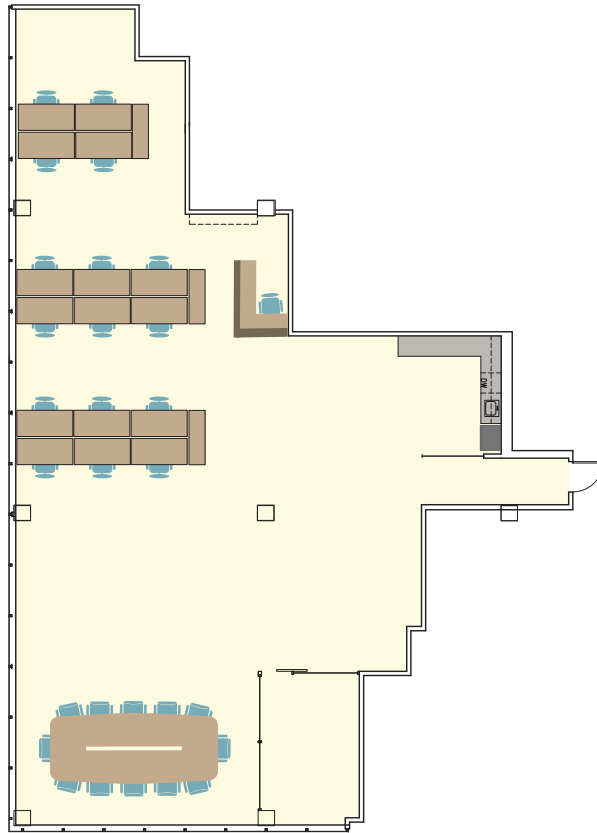
Suite 510
2,360 sf



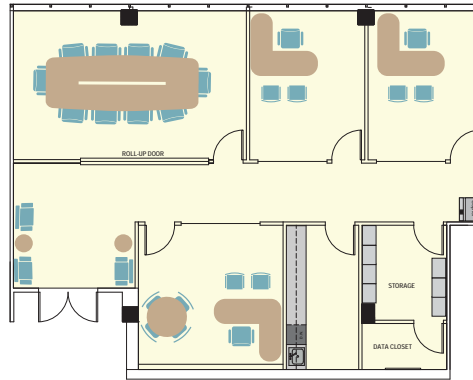
AVAILABLE SUITES



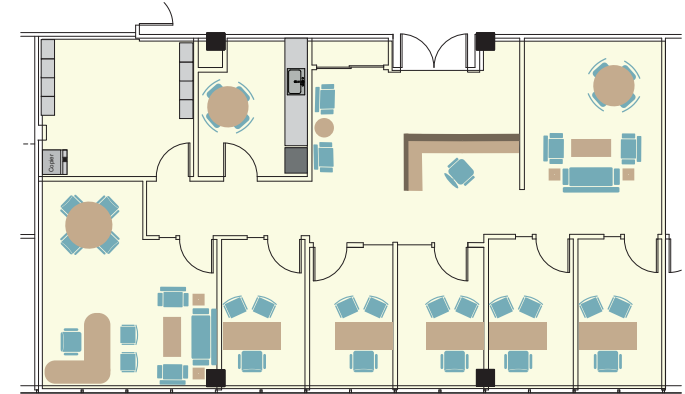
Suite 505
3,330 sf



Furnished with Cabling & Internet Enterprise

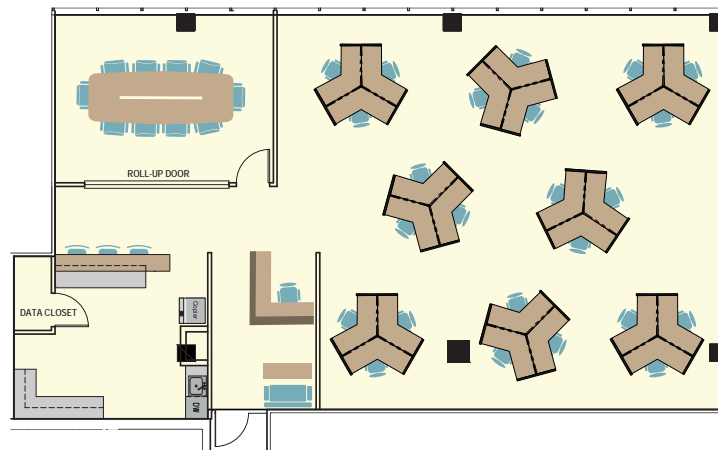


Suite 620
2,007 sf



(Available 2/1/2026)

Suite 655
2,293 sf



Suite 650
2,719 sf



For leasing information contact:

Michelle Gertzman | 720.743.6399
mgertzman@premisescommercial.com

Matt Smith | 303.996.8460
msmith@premisescommercial.com

AVAILABLE SUITES